

Your diabetes data, simply there.

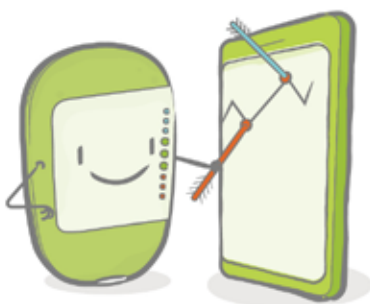
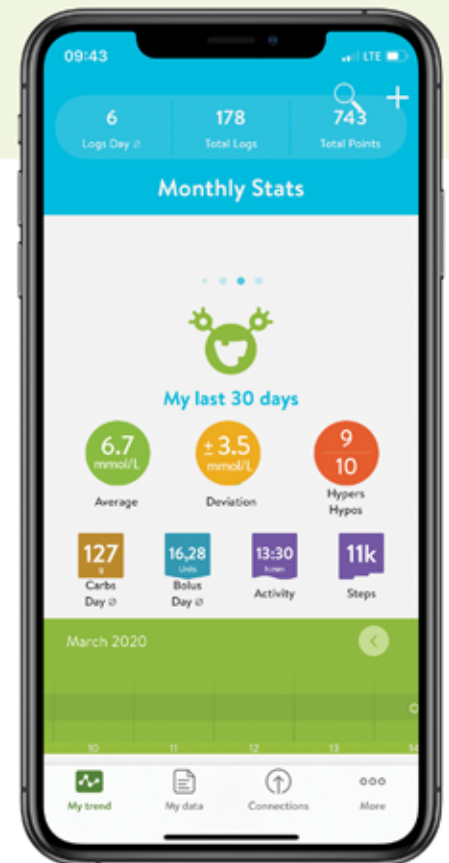


With the mySugr® app it's quick and easy to collect all your important diabetes therapy data in one place through a growing number of connected devices, integrations and manual logging.

mySugr is created by people with diabetes for people with diabetes and eases the complexity of your daily diabetes routine. We envision a world where a person with diabetes can live a full and healthy life, freed from worrying about the daily grinds of their therapy. With over 3 million registered app users in more than 70 countries¹, we are well on our way to achieving our goal to make diabetes suck less®!

Your diabetes data at a glance

The dashboard for mySugr shows an overview of all the relevant data points for quick review as well as patterns in your blood sugar. With an easy-peasy swipe to the left you can access your diabetes data from the previous 7, 14, 30 or 90 days. Using clear infographics, mySugr helps you identify areas where your management could be optimised.



Handy info for timely decisions

- Current day stats visible for (bolus-) fine-tuning
- Colorful infographics make for easy pattern detection
- Compare weekday data and analyse blood sugar for trends
- Simply swipe left and see patterns for the week, month, or even quarterly analysis



Actionable info at your fingertips with just a swipe

mySugr helps you find the patterns in your data, so you can have greater confidence in managing your diabetes. The centralised dashboard, showcases current data, adds valuable time to your day. Discover your ever-changing trends in the overview. Thus helping you understand your diabetes, since it's not one-size-fits-all. Stress less...live more!

- 1 Open the mySugr app
- 2 Log your blood sugar values or import them with your connected Accu-Chek Guide or Accu-Chek Guide Me meter
- 3 View the current day trends right on the home screen (scroll down to see more details)
- 4 Swipe left to see more options for 7, 14, 30 or 90 day patterns
- 5 Drill down on any graph segment by clicking the small arrow to see more details like deviations, blood sugar average, daily carb and bolus averages, and more



Screen images shown are examples only and images you see may vary depending on device and app version.

Frequently featured in popular diabetes media, (Medical Tribune, The Diabetes Times, The Guardian and Deutsche Ärztezeitung) mySugr is the app that helps with the daily diabetes therapy. mySugr eases the process of logging and features a home screen where you can view graphs, daily stats, data, and much more! With mySugr, a host of features come together in one easy to use tool.



Reference: 1. Roche Messaging Warehouse, July 2021

*mySugr PRO benefits include additional features like PDF and Excel Report, Smart Search, motivating challenges, Meal photos and much more!

WARNING – KEEP BATTERIES OUT OF REACH OF CHILDREN. If you suspect your child has swallowed or inserted a button battery immediately call the 24-hour Poisons Information Centre on 13 11 26 for fast, expert advice. FOR PEOPLE WITH DIABETES. ALWAYS READ THE INSTRUCTIONS FOR USE. CONSULT YOUR HEALTHCARE PROFESSIONAL FOR ADVICE. ACCU-CHEK, ACCU-CHEK GUIDE, ACCU-CHEK GUIDE ME, MYSUGR and MAKE DIABETES SUCK LESS are trademarks of Roche. Apple and Google trademarks are the property of their respective owners. Bluetooth® word mark and logos are registered trademarks owned by Bluetooth SIG, Inc. and any use of such marks by Roche Diabetes Care is under license. All other product names and trademarks are the property of their respective owners. ©2021 Roche Diabetes Care. Roche Diabetes Care Australia Pty Limited, 2 Julius Avenue North Ryde NSW 2113. ABN 69 602 140 278. July 2021. AU-991.