

The Accu-Chek Instant S meter: Effortless blood glucose testing in clinical settings



Simple preparation – No setup:

1. Insert a test strip
2. Apply blood
3. Read the result



Testing Principle:

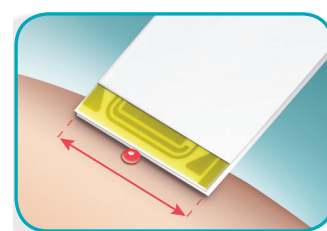
Electrochemical testing method using FAD-GDH¹

System Performance²:

Test time:	<i>less than 4 sec</i>
Sample size:	<i>0.6 microlitre</i>
Accuracy:	<i>95% of blood glucose readings within +/- 10/10 of the lab reading</i>
Blood samples:	<i>capillary, arterial, venous and neonate blood</i>
Pricking zones:	<i>finger, forearm, palm and upper arm</i>
Haematocrit range:	<i>10 - 65 %</i>
No oxygen interference:	<i>enzyme is not susceptible to oxygen</i>
No galactose interference:	<i>tested to 16.7 mmol/L (therapeutic maximum 3.33 mmol/L)</i>

Easy-edge test strip:

- A small drop of blood can be dosed anywhere along the yellow edge
- Fast, easy fill strip – results in less than 4 seconds
- Wide blood application area compared to leading brands³



Professional lancing:

Can be used in combination with the single-use lancing devices:

- Accu-Chek Safe-T-Pro Plus



Effortless blood glucose testing in clinical settings

Example with the Accu-Chek Instant S meter

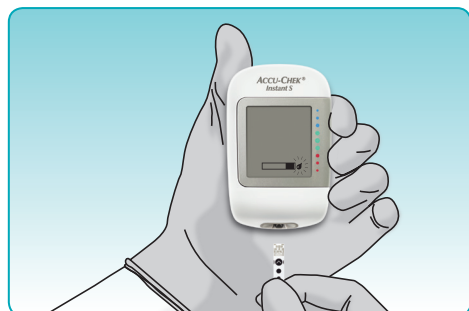
Start



1. Wear protective gloves.

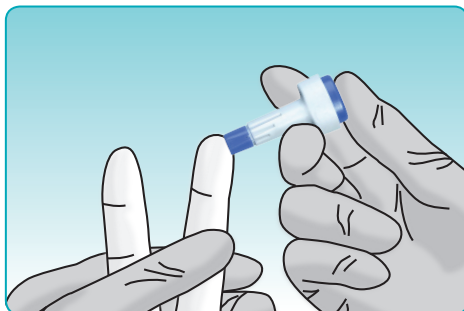


2. The patient's hands should be washed with warm water and then dried well.

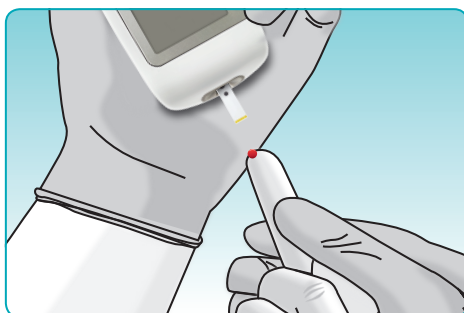


3. To turn on the meter insert the test strip into the meter. When the blood drop symbol flashes, you can perform a test.

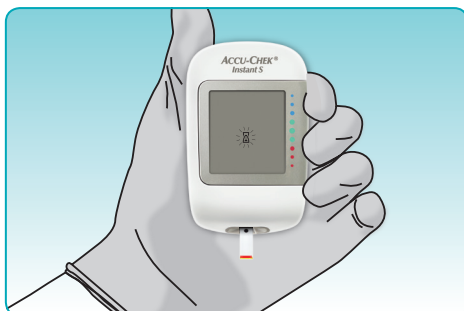
Test




4. Lance the side of the fingertip with the lancing device approved for professional use.

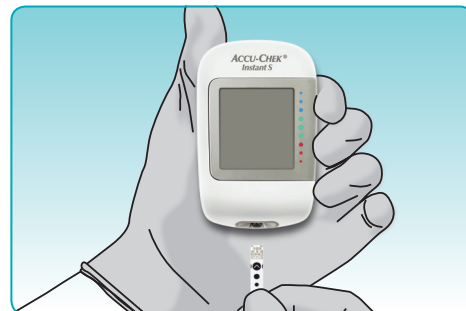


5. Touch the blood drop to the front edge of the yellow window of the test strip. Do not apply blood on top of the test strip.



6. Remove finger from the test strip when the flashing hourglass symbol  appears. The test result appears on the display in less than 4 sec.

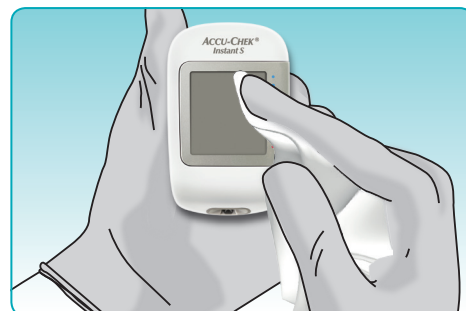
Finish



7. After a successful test, the meter turns off 15 sec after the test strip is removed.



8. Dispose of the used test strip and the used lancet in a sharps container.



9. Gently wipe the meter's surface with a soft cloth slightly dampened (wring out any excess liquid), e.g. with 70% isopropyl alcohol.

www.accu-chek.com.au • Accu-Chek Enquiry Line: 1800 251 816

WARNING – KEEP BATTERIES OUT OF REACH OF CHILDREN.

If you suspect your child has swallowed or inserted a button battery immediately call the 24-hour Poisons Information Centre on 13 11 26 for fast, expert advice.

References: 1. Accu-Chek Instant test strip package insert. 2. Accu-Chek Instant S System Evaluation Report. 3. Roche data on file.

For people with diabetes. Use only as directed. Consult your healthcare professional for advice. Accu-Chek lancing devices are for single patient use only. The same device must not be used for multiple patients. ACCU-CHEK, ACCU-CHEK INSTANT and SAFE-T-PRO are trademarks of Roche. ©2019 Roche Diabetes Care. Roche Diabetes Care Australia Pty Limited, 24-32 Lexington Drive, Bella Vista NSW 2153 Australia. ABN 69 602 140 278. 08928231001. AU-398. Date of preparation Jan 2019.



ACCU-CHEK®