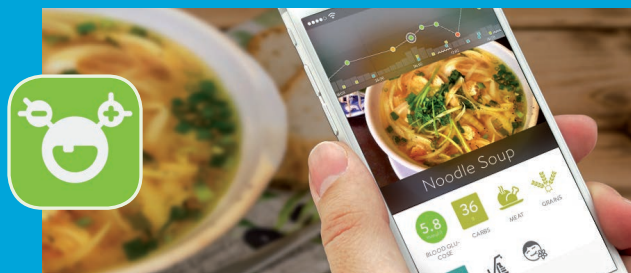


Pair now and automatically activate  
**mySugr Pro for FREE.**

mySugr Pro features

- **Search** – quickly find all data and entries
- **Photos** – take pictures of your meals
- **PDF-Reports** – get an overview of your data
- **Blood glucose reminders** – timely reminders for blood glucose checks
- **Insulin calculator** - bolus dose calculations
- **Basal rate for pump users** - also visible in the graph



Download the mySugr app now!



WARNING – KEEP BATTERIES OUT OF REACH OF CHILDREN.

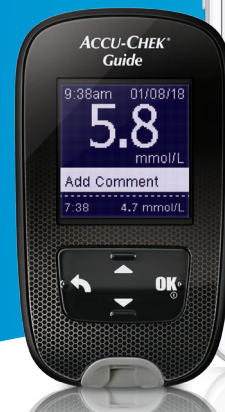
If you suspect your child has swallowed or inserted a button battery immediately call the 24-hour Poisons Information Centre on 13 11 26 for fast, expert advice.

*FOR PEOPLE WITH DIABETES. ALWAYS READ THE INSTRUCTIONS FOR USE. CONSULT YOUR HEALTHCARE PROFESSIONAL FOR ADVICE.*

ACCU-CHEK, ACCU-CHEK GUIDE and MYSUGR are trademarks of Roche. Apple and Google trademarks are the property of their respective owners. Bluetooth® word mark and logos are registered trademarks owned by Bluetooth SIG, Inc. and any use of such marks by Roche Diabetes Care is under license. All other product names and trademarks are the property of their respective owners. ©2021 Roche Diabetes Care. Roche Diabetes Care Australia Pty Ltd, 2 Julius Avenue North Ryde NSW 2113 Australia. ABN 69 602 140 278. 09052127001. AU-504. Date of preparation January 2021.

# ACCU-CHEK® GUIDE

**THE BLOOD GLUCOSE METER  
THAT OFFERS SEAMLESS  
COMPATIBILITY WITH MYSUGR.**



Connect your meter to the mySugr app to help your diabetes management!

## mySugr app

Reliably there for when you need it, mySugr helps with everyday life and makes diabetes suck less.



## Estimated HbA1c

No more surprises. You're always well prepared for routine doctor's visits with an estimated HbA1c.

## Analyse

Get deep insights into your diabetes data with instant analysis of the last 7, 14, 30 and 90 days.

## Reports

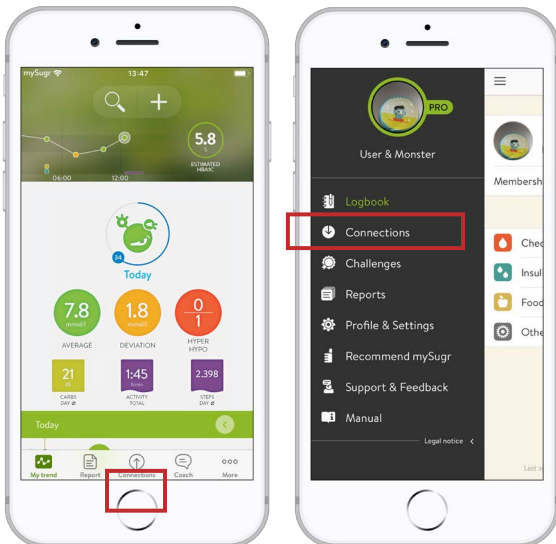
A detailed mySugr Report is available in just a few steps with the Accu-Chek Guide meter. It's a perfect overview for you and your doctor.

## Search

Quickly search for important therapy data right in the app: food, notes, hypos, activity, HbA1c levels, and much more.

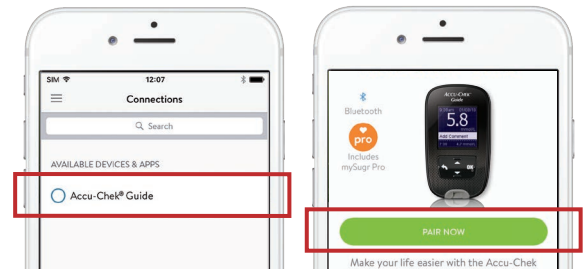
## Getting started with mySugr and the Accu-Chek Guide meter

- 1 Enable Bluetooth  $\times$  on your smartphone. Refer to your smartphone owner's manual if necessary.
- 2 Open the Connections menu – depending on which smartphone you use it may be found at the bottom of the home screen or in the side menu.



Screen images shown are examples only and images you see may vary depending on device and app version.

- 3 Select Accu-Chek Guide and click on "Connect now."



- 4 Turn on the Accu-Chek Guide meter and go to "Settings."
- 5 Select "Wireless" and then "Yes."
- 6 Enter the code displayed on your meter into the notification on your smartphone and confirm the pairing.
- 7 Return to "Wireless" in your meter settings and turn on "Auto-Send" to allow future blood glucose levels to be automatically transferred to the Logbook.