

ACCU-CHEK® Safe-T-Pro Plus



ACCU-CHEK **SAFE-T-PRO PLUS**

The innovative 3-in-1 single-use lancing device
for different types of patients

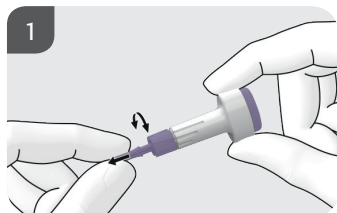


THE ACCU-CHEK SAFE-T-PRO PLUS LANCING DEVICE

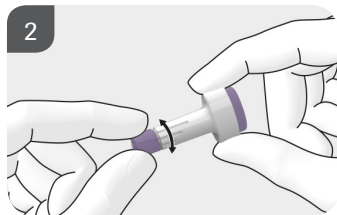
Ideal for different types of patients and virtually pain-free¹

THE CLEVER CHOICE:

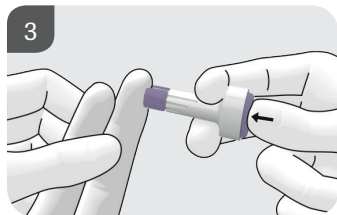
A professional lancing systems with 3 adjustable depth settings and over 10 years of trusted reputation. **Its Safe-T Technology supports safety and ease of use for both patient and user.**



- Sterile cap and built-in safety mechanism to ensure single use and safe disposal¹



- 3 adjustable depth settings* in one device:¹
1.3 mm / 1.8 mm (suitable for neonates and children < 1 year) / 2.3 mm
- 3-facet cut, siliconized needle for gentle lancing (diameter 0.63 mm, 23 G)

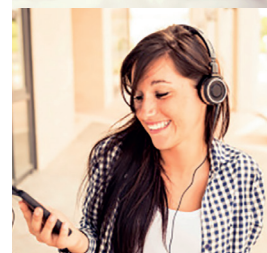


- Easy handling due to ergonomically sound T-shape design



- Available in a convenient box with 200 single-use lancing devices
- Only one type of lancets to store saves on space and costs

Also suitable for children < 1 year and even neonates¹



ACCU-CHEK SAFE-T-PRO PLUS

The innovative 3-in-1 single-use lancing device for different types of patients