



ACCU-CHEK, ACCU-CHEK MOBILE, ACCU-CHEK SMART PIX, ACCU-CHEK 360°, ACCU-CHEK CONNECT and FASTCLIX are trademarks of Roche.

CONTINUA, the CONTINUA logos and CONTINUA CERTIFIED are trademarks, service marks or certification marks of the Continua Health Alliance. CONTINUA is a registered trademark in some, but not all countries in which this product is distributed.

The USB-IF logos are trademarks of Universal Serial Bus Implementers Forum, Inc.

© 2017 Roche Diabetes Care

Roche Diabetes Care GmbH
Sandhofer Strasse 116
68305 Mannheim, Germany

www.accu-chek.com

ACCU-CHEK®

ACCU-CHEK® Mobile



User's Manual and Quick Start Guide

Blood glucose monitoring system



ACCU-CHEK®



IMPORTANT INFORMATION ON PERFORMING A BLOOD GLUCOSE TEST

An incorrectly performed blood glucose test may lead to incorrect test results which can cause the wrong therapy recommendation to be made and thus produce serious adverse health effects. Therefore, **read** the information on how to perform a blood glucose test correctly, carefully.

Do		Do not	Why
1			<p>An incorrectly performed blood glucose test may lead to falsely elevated blood glucose results and thereby delivery of an inappropriately high insulin amount. Falsely elevated test results are caused by the following:</p> <ul style="list-style-type: none">Fingers have not been washed or were soiled or sticky.If the blood drop spreads on the finger or if the blood drop becomes smeared on the test area, the risk of contamination of the test area increases (for example, due to glucose residue from, for example, food or drink).The finger was pressed onto the test area.Trembling or shaky movements while performing the blood glucose test.The blood glucose test was not performed immediately or the finger was resting on the guidance tabs for too long. Pay attention to the beep tone. The beep tone helps you to obtain a reliable test result.
2			
3			
4			

Before testing your blood glucose: **Wash your hands** with soap and warm water; rinse well to remove any visible or invisible signs of glucose residue from, for example, food or drink. Dry your hands thoroughly with a clean towel.

Always use a fresh, well-formed blood drop and perform the test as quickly as possible after lancing.

When performing the test, place your finger gently on the guidance tabs so that **only the blood drop** comes into contact with the **centre of the test area**. Your finger should not make any contact with the test area. Keep your finger as still as possible.

When the beep tone sounds and *Test in progress* is displayed on the screen, remove your finger from the test cassette immediately.
Note: You can only hear the beep tones when they are turned on. See *Setting tones* in the User's Manual.

Do **not** perform a blood glucose test if the testing site has not been washed or is soiled or sticky (for example, due to glucose residue from, for example, food or drink).

Do **not** delay applying the blood drop to the test area. Do not perform a blood glucose test with a smeared or spread blood drop. Do not smear the blood drop on the test area.

Do **not** attempt to force your finger between the guidance tabs or apply any direct pressure to the test area. Avoid trembling or shaky movements.

Do **not** keep your finger on the guidance tabs or apply pressure to the test area after the beep tone sounds and/or *Test in progress* is displayed on the screen.

ACCU-CHEK® Mobile



Quick Start Guide

Start Here

ACCU-CHEK®



- | | |
|---------------------------------------------------|-----------------------------------------------------------|
| 1 Release button (priming and pricking) | 8 Test area (at the tip of the cassette ready for a test) |
| 2 Power and enter button | 9 Lancet drum |
| 3 Down/Up buttons | 10 Slide button to release the finger pricker |
| 4 Window showing number of available lancets | 11 Slide button to open the cassette compartment cover |
| 5 Lever for loading a new lancet | 12 Tip cover |
| 6 Rotatable cap for setting the penetration depth | 13 Test cassette |
| 7 Tip cover closed (below right: open) | 14 Guidance tabs |

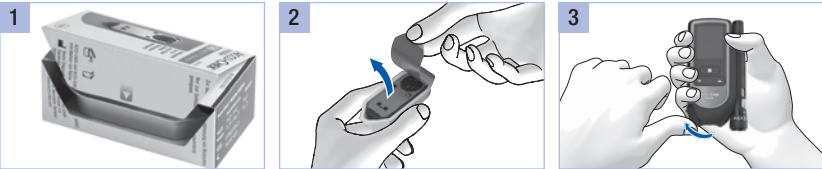


■ The meter and finger pricker are intended for personal use only!

They may only be used by one and the same person for performing a blood glucose test. There is a risk of infections being transmitted if the meter or finger pricker is used by other people, even by family members, or if healthcare professionals use this meter to test blood glucose or this finger pricker to obtain blood from different people.

■ This Quick Start Guide does not replace the detailed User's Manual of your Accu-Chek Mobile blood glucose monitoring system. Be sure to comply with the safety information in the User's Manual and in the package insert of the test cassette.

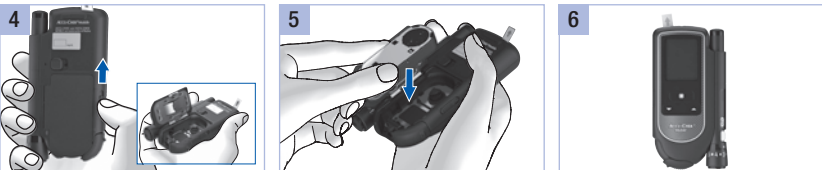
1. Starting to use the blood glucose monitoring system



Open the test cassette box at the perforation. Take out the plastic container.

Remove the new test cassette from the plastic container.

Open the tip cover.



Push the slide button for the cassette compartment cover upwards in the direction of the arrow.

Insert the test cassette in the meter. Press the cassette compartment cover closed. Close the tip cover.

Pull the protective strip of the batteries backwards out of the meter. Remove the protective film from the display.



Press for about 2 seconds until the meter turns on.

Use to select a language (highlighted in yellow). Press .

Press .

2. Preparing the finger pricker



Remove the cap from the finger pricker.

Insert the new lancet drum, white end first.

Do **not** remove the lancet drum until all 6 lancets have been used.



Place the cap back on again.

The cap is on correctly when it is pushed back as far as it will go, and you hear and feel it click into place.

The cap can only be easily placed on up to the stop position when the lancet drum is completely inside the finger pricker. Do not use force to place the cap on. This might damage the cap and finger pricker. Instead, correct the position of the lancet drum.



Rotate the cap until the desired penetration depth lines up with the indicator.

Tip: When obtaining blood, start with a medium penetration depth, such as 3.

Push the lever in direction **A** and then back again in direction **B**.

Loading a new lancet: Prepare the finger pricker for obtaining blood again.

3. Performing a blood glucose test



Before you perform a blood glucose test: Observe the important instructions on performing a blood glucose test.

Wash your hands with warm water and soap and rinse well.

Dry your hands thoroughly with a clean towel before you obtain blood.



Open the tip cover.

Press the finger pricker firmly against the selected puncture site.

Press the release button all the way down.



To apply the blood drop to the test area: Position your finger gently on the guidance tabs so that **only** the blood drop comes into contact with the test area between the guidance tabs.

Remove your finger from the test cassette as soon as *Test in progress* is displayed.

Testing is complete after approximately 5 seconds. Read the test result and close the tip cover.

Customer Support and Service Centre

Australia
Accu-Chek Enquiry Line: 1800 251 816
Pump Support: 1800 633 457
www.accu-chek.com.au

Hong Kong
Enquiry hotline: +852-2485 7512 (office hours)
www.accu-chek.com.hk

United Kingdom
Roche Diabetes Care Limited
Charles Avenue, Burgess Hill
West Sussex, RH15 9RY, United Kingdom
Accu-Chek Customer Careline ¹⁾
UK Freephone number: 0800 701 000
ROI Freephone number: 1 800 709 600
¹⁾ calls may be recorded for training purposes
Some mobile operators may charge for calls to these numbers.
www.accu-chek.co.uk
www.accu-chek.ie

Last update: 2017-02



ACCUCHEK, ACCUCHEK MOBILE and FASTCLIX are trademarks of Roche.

© 2017 Roche Diabetes Care

Roche Diabetes Care GmbH
Sandhofer Strasse 116
68305 Mannheim, Germany
www.accu-chek.com