

Accu-Chek® LinkAssist Training Chart

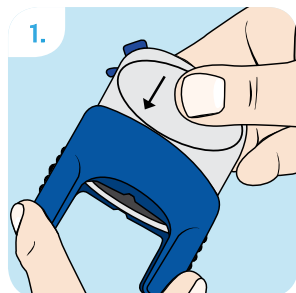
For Users of the Accu-Chek FlexLink cannula with the aid of the Accu-Chek LinkAssist insertion device.

The Accu-Chek LinkAssist insertion device is used to insert the Accu-Chek FlexLink cannula for the subcutaneous infusion of insulin with an insulin pump.

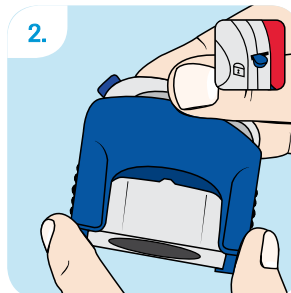


Please wash your hands before use.

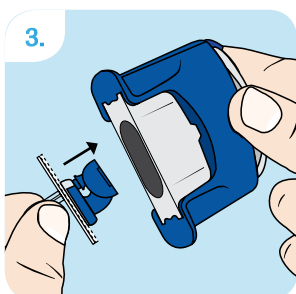
Choose a site away from waistline, bones, scar tissue, belly button and recent insertion sites. Prepare site according to the instructions from your healthcare professional. Allow the insertion site to dry before the cannula is inserted.



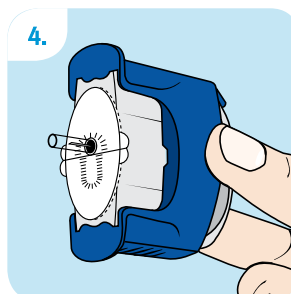
1. Push the tensioning element (grey) of the insertion device into its base (blue).



2. The insertion device is now pretensioned. This step "locks" the safety catch in place, and automatically makes the insertion device secure.

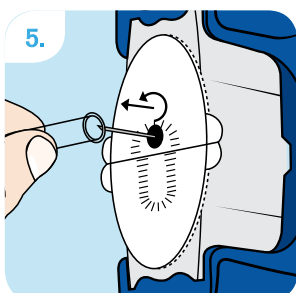


3. Hold the cannula by its protective cover and with the blue holder cap pointing upward, insert it from below into the opening of the insertion device until you feel it lock into place.

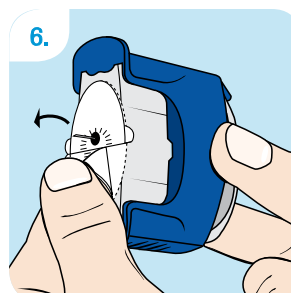


4. Correct placement of the cannula.

Note: The perforation mark on the self-adhesive backing directs you to the location of the tube connection.

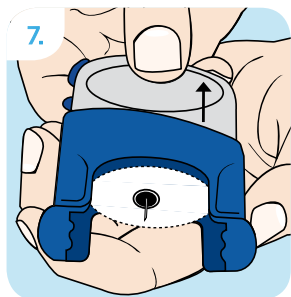


5. Carefully remove the transparent protective cover of the cannula by turning and pulling at the same time.

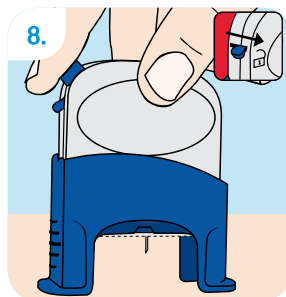


6. Remove both pieces of the self-adhesive backing from the cannula.

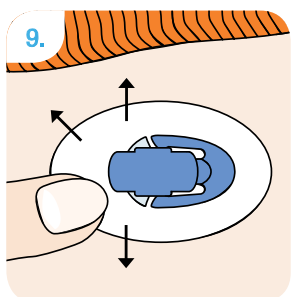
Instructions continue overleaf...



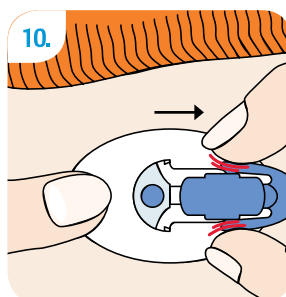
Hold the base of the insertion device firmly in one hand and with the other hand pull the tensioning element (grey) out and up as far as it will go.



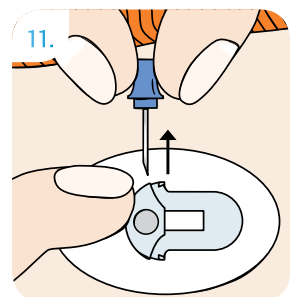
Holding the tensioning element, position the insertion device onto the prepared insertion site. Slide the safety catch out of the lock position. Press the release button.



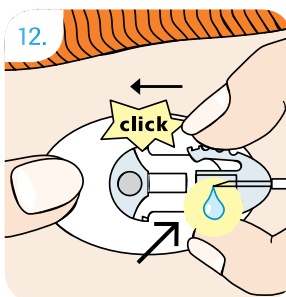
Press the adhesive plaster firmly, ensuring it makes good contact with the skin.



Holding the adhesive plaster in place, gently press the side clips of the blue holder cap and slide it from the cannula.



To remove the introducer needle, hold the cannula firmly to your body. Using its handle, withdraw the introducer needle at a straight angle. Dispose of the introducer needle in accordance with local regulations.



Connect the primed* tubing to the newly inserted cannula. A click must be heard when connecting. Fill the empty space of the cannula with a bolus of 1.0 units of insulin U-100. Start the pump.

*How to prime the tubing set: Screw the luer-lock tightly into the pump adapter. Prime the Accu-Chek FlexLink according to the pump manufacturer's operating instructions until the insulin emerges at the tip of the connector needle. Do not leave air bubbles in either the cartridge or the tubing.

Please refer to the Instructions for Use of the Accu-Chek Flexlink and Accu-Chek LinkAssist for warnings, precautions and more detailed information.

See our website for the full range of Accu-Chek insulin delivery system products as well as additional tubing and cannula length options.

www.accu-chek.com.au • Pump Hotline: 1800 633 457 • Email: australia.insulinpumps@roche.com

For people with diabetes. Use only as directed. Consult your healthcare professional for advice.

ACCU-CHEK, ACCU-CHEK FLEXLINK and ACCU-CHEK LINKASSIST are trademarks of Roche.

© 2018 Roche Diabetes Care.

All other product names and trademarks are the property of their respective owners.

Roche Diabetes Care Australia Pty Ltd, ABN 69 602 140 278

24-32 Lexington Drive, Bella Vista NSW 2153

01/2018 AU-207

ACCU-CHEK®