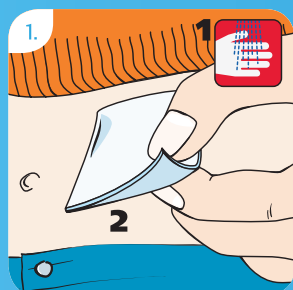
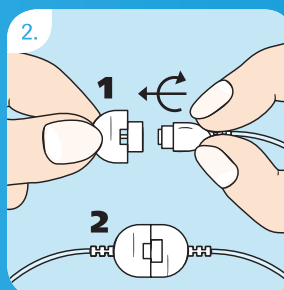


Accu-Chek® Rapid-D Link Training Chart

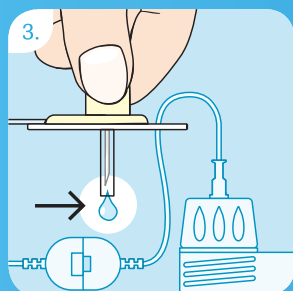
The Accu-Chek Rapid-D Link infusion set is intended for the subcutaneous infusion of insulin.



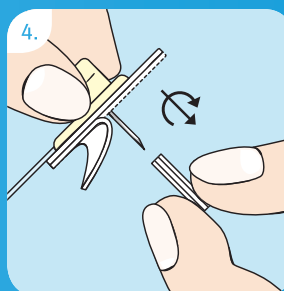
Choose a site away from the waistline, bones, scar tissue, belly button and recently used insertion sites. Clean hands and the insertion site according to the instructions from your health care professional. Allow insertion site to dry before inserting the Accu-Chek Rapid-D Link.



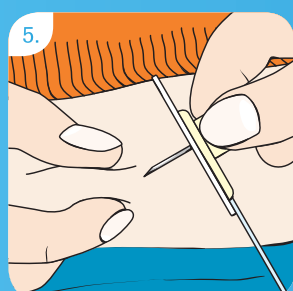
1) After removing the cannula and the tubing from the sterile packaging hold the two halves so that they form a cross. Fit the parts directly into one another. 2) Connect them by turning one quarter of a turn in a clockwise direction until they click noticeably and audibly into place.



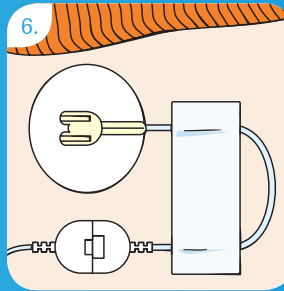
Screw the luer-lock firmly into the pump adapter. Prime the Accu-Chek Rapid-D Link according to the pump manufacturer's operating instructions until the insulin emerges at the tip of the steel cannula. Do not leave air bubbles in the cartridge or in the tubing of the Accu-Chek Rapid-D Link.



Hold the Accu-Chek Rapid-D Link with thumb and forefinger at the disc holder. With the other hand, remove the adhesive backing from the cannula and twist the protective cover off the steel needle.



Pinch a bit of tissue together at the insertion site. Insert the Accu-Chek Rapid-D Link straight into the skin at a 90° angle. Press the adhesive plaster firmly onto the insertion site, ensuring that it makes good contact with the skin. Bend the disc holder sideways to remove it.



Form a loop with the tubing and secure it into place with a strip of adhesive plaster. Start the pump.

Please refer to the Instructions for Use of the Accu-Chek Rapid-D Link for detailed information.

Experience what's possible.

www.accu-chek.com.au • Pump Hotline: 1800 633 457 • Email: australia.insulinpumps@roche.com

ACCU-CHEK and ACCU-CHEK RAPID-D LINK are trademarks of Roche.
© 2013 Roche. All other trademarks are the property of their respective owners.
Roche Diagnostics Australia Pty Ltd, 31 Victoria Avenue, Castle Hill NSW 2154,
ABN 29 003 001 205.
ROCR0205 11/13

ACCU-CHEK®